

DESCRIPTION:

20-degree linear asymmetric light bending film.

APPLICATIONS:

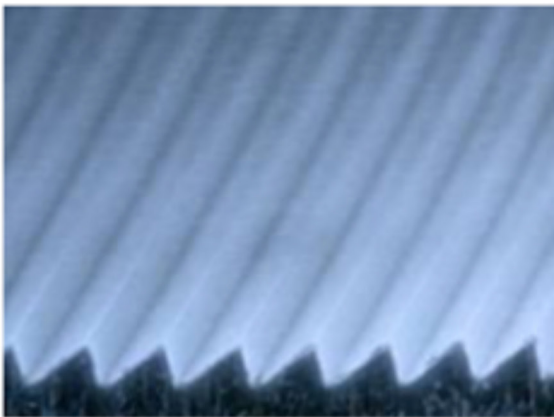
Display and lighting application where asymmetric light bending [insert] is required.

OPTIONS:

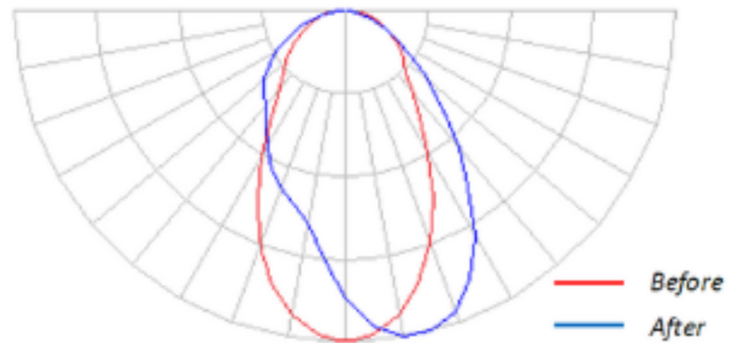
Available in roll, pre-cut sheets or as custom die-cut parts.
Also available Direct Cast onto rigid acrylic sheets, polycarbonate or glass.



Asymmetric Light-Bending
Diffusion Film (DFLB)



DFLB 20 Microstructure



Effect of DFLB 20 on a linear source

ORDERING INFORMATION

Series	Prism Angle Designation	Thickness (inches/1000)	Material format	Width (inches)	Unit of Measure for Order Qty
DFLB Asymmetric Light-Bending Diffusion Film	20 20° off of nadir >93% efficient	5 5 mil (0.005"/0.127mm)	R Roll (length in feet determined by unit quantity ordered)	--- Width of roll (inches, 24.00" max width)	LF Linear feet

EXAMPLE: Order quantity (250) of cat# **DFLB 20 5 R 10.75 LF** to receive a roll containing 250 linear feet of 10.75" wide DFLB 20 material (5 mil thick).

For more information contact customer service email: inquiries@whiteoptics.com