



REFLECT • DIFFUSE • CONTROL

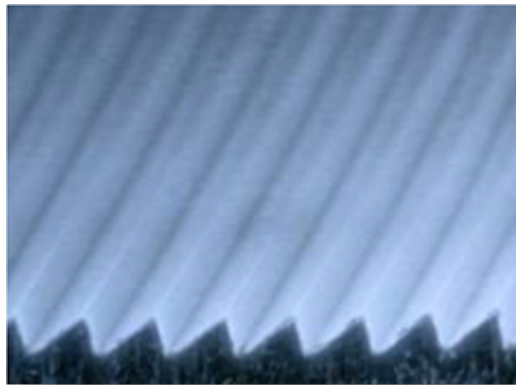
# WhiteOptics® Asymmetric Light Bending Film

**Part Code:** DFLB-20

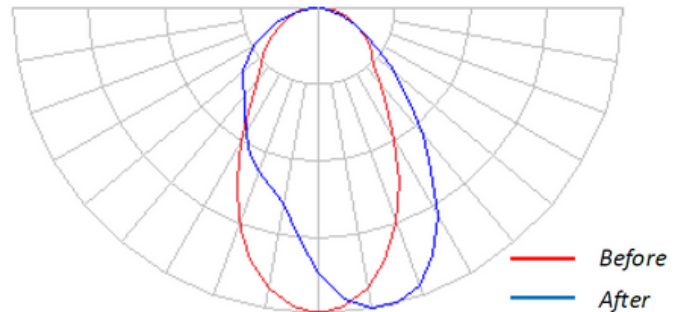
**Descriptor:** 20 degree linear asymmetric light bending film

**Application:** Display and Lighting applications where asymmetric light bending is required. Can be used with collimated and diffused sources to create asymmetric “wall wash” distributions. Works with both linear and spot sources.

**Options:** Available in roll, pre-cut sheets or as custom die-cut parts. Also available Direct Cast™ onto rigid acrylic sheets, polycarbonate or glass.



DFLB-20 Microstructure



Effect of DFLB-20 on a linear source

Product Code	Bending Angle	Optical Efficiency*	Available Width	Thickness
DFLB-20	20°	>93%	24" (610mm)	0.005" (127 μm)

*\*Achievable optical utilization for LED emitters in 2" deep optical cavity with WhiteOptics F16-98 film placed on side and back walls and DFLB-20 film used as lens. Results will vary depending on geometrical design and emitter type.*



WhiteOptics LLC  
243-G Quigley Blvd.  
New Castle, DE 19720



[inquiries@whiteoptics.com](mailto:inquiries@whiteoptics.com)  
[whiteoptics.com](http://whiteoptics.com)



302-476-2055



This information has been carefully compiled from experience gained in the laboratory and under commercial conditions. However, the product's performance and its suitability depends on the particular conditions of use. We recommend that customers satisfy themselves that each product meets their requirements in all respects. This information is being provided by WhiteOptics LLC free of charge as a courtesy to customers, and WhiteOptics LLC HEREBY DISCLAIMS ALL REPRESENTATIONS, WARRANTIES AND LIABILITIES WITH RESPECT TO THE INFORMATION AND USE THEREOF. WhiteOptics® White98 is a trademark exclusive to WhiteOptics LLC. All rights reserved.